

IMPACT+PLUS

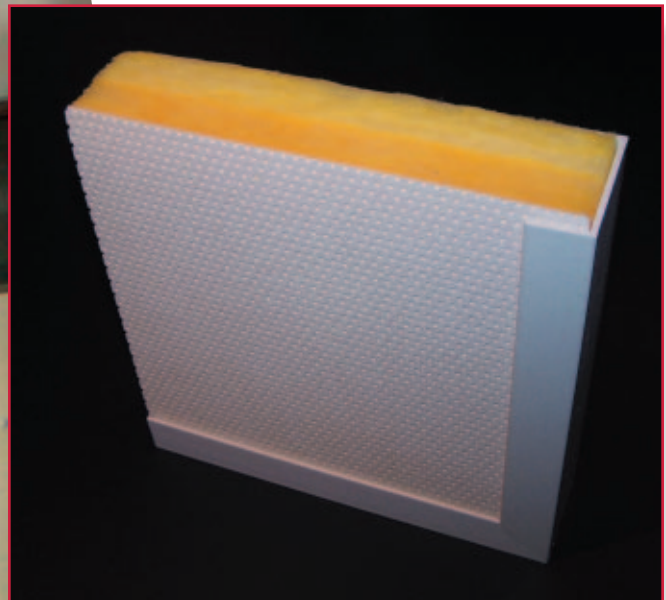
FROM

Quiet
COORDINATES

A tough new facing developed for High Impact areas such as behind bleachers, or at hand level in cafeteriums, corridors, and industrial applications.

IMPACT+PLUS is...

- A .063 (1/16") perforated thermoplastic sheet, adhered to a 1-7/8" thick, dual density Quiet Coordinates fiberglass core panel.
- Standard colors – White or over 1,000 Sherwin Williams field painted colors. Integral colors available in larger quantities.
- Standard Sizes – 4' x 4' or 4' x 8'; other sizes available upon request.



IMPACT+PLUS Quiet Coordinates Wall Panels are the **ultimate in High Abuse Panels** and offered as a part of the unique Quiet Coordinates Acoustical Systems for Walls, Clouds, Ceilings, and Baffles.

CMA

205 Earl Road
Shorewood, IL 60434
Website: www.cmainc.net

IMPACT+PLUS

For those really HIGH ABUSE AREAS of concern

IMPACT+PLUS is...

■ Acoustical Absorption – Tested in accord with ASTM-C423 at Riverbank Labs (Test A06-080) Results are NRC of 0.85; SAA of 0.88; 0.99 @ 500 hz.

■ Perforation Pattern—.093 (3/32”) diameter holes on .1875 (3/16”) staggered centers, 23% open area.

■ Class A, Incombustible; Less than 25 Flame Spread per ASTM E-84 Tunnel Test, for all components.

■ Additional Test Information such as tensile strength, etc. available upon request.



Acoustical Test, IMPACT+PLUS Quiet Coordinates

Octave Band Center Frequency, Hz										
Acoustical Material	Description	Mounting	125	250	500	1000	2000	4000	NRC	Test #
Wall Panels	2” IMPACT+PLUS	A Modified	0.28	0.54	0.99	1.02	0.94	0.90	0.85	RAL A06-080

Sound Absorption Average (SAA) = 0.88

NOTES TO ABOVE TEST

1. “A” Mounting is directly against structural wall with no air space.
2. All tests for Sound Absorption are in accordance with ASTM C-423-99a. Actual installed values may vary depending upon many variables such as type of construction and humidity.
3. All Acoustical Tests performed in an independent laboratory.
4. Panel Tested – .063 (1/16”) Perforated Polymer, 23% Open Area laminated to Quiet Coordinates Dual Density Core.

Samples, budget pricing, and specific applications are available upon request. CMA has Sales Representatives in every major North American market.



Facings Include:

- Standard Matte Fiberglass Facing
- Tuff-Stuff Fiberglass Facing
- Nylon Ripstop Sailcloth
- Impac-Tac Tackable Face
- IMPACT+PLUS



The Family of Quiet Coordinates – We Continue to Grow!

205 Earl Road
 Shorewood, IL 60434
 email: cmainc@cmainc.net
 Website: www.cmainc.net

Toll Free: 866.730.9750
 Tel: 815.730.9750
 Fax: 815.730.9752